

BASS

The Chicken

2016名古屋音楽大学ジャズ・ポピュラーの日 参考譜面

渡辺 勉

♩=120 DRUMS

The bass line is written in 4/4 time with a key signature of two flats (Bb). It consists of seven systems of music. System 1 (measures 1-4) includes a drum pattern and a melodic line starting with a double bar line and a repeat sign. System 2 (measures 5-8) continues the melodic line. System 3 (measures 9-12) contains three measures with a slash indicating a drum solo, followed by a melodic line. System 4 (measures 13-16) continues the melodic line. System 5 (measures 17-19) includes a measure with a circled cross symbol and a melodic line. System 6 (measures 20-23) contains three measures with a slash indicating a drum solo, followed by a melodic line. System 7 (measures 24-27) continues the melodic line.

Chord progressions: A, F7(b9), Bb, Eb7, Bb, Eb7, D7, G7, C7, Bb, Bb, Eb7, D7, G7.

Section markers: A, B, C, D, E.

Measure numbers: 5, 9, 13, 17, 20, 24, 28.

2
F

C⁷



32

G B^b



35

E^{b7}

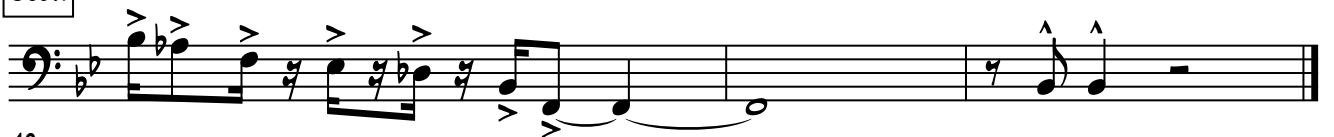


38



CODA

F^{7(b9)}



40