

Bass

FLY ME TO THE MOON

2016 名古屋音楽大学「ジャズ・ポピュラーの日」

渡辺勉

♩ = 140

Dm7 **A**

Gm7



SOLO

A7

BDm7

Gm7

5



*自分でランニングのラインを考えてみましょう

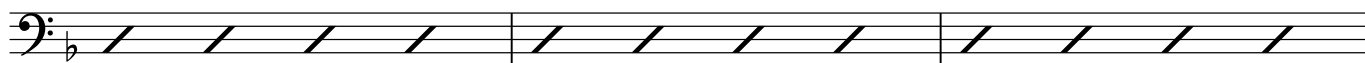
C7

Fm7

F7

Bb

8



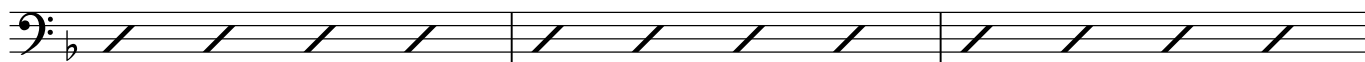
Gm6

A7

Dm

D7

11



Gm

Gm7

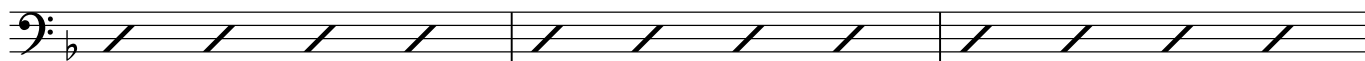
C7

Gm7

C7

F

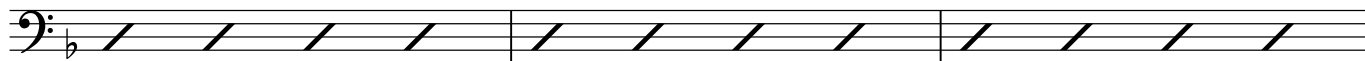
14



Gm

C7

17



Bbm6

F

Em7

A7

CDm7

20



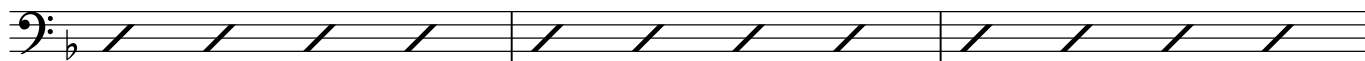
Gm7

C7

Fm7

F7

23



FLY ME TO THE MOON

26 $B\flat$ Gm6 A7

29 Dm D7 Gm Gm7 C7 Gm7 C7

32 Cm6 D7 Gm7

35 C7 F A7 $\text{\textcircled{D}}$ Dm7

39 Gm7 C7 FM7 F7

42 $B\flat$ Gm6 A7

45 Dm D7 $\text{\textcircled{E}}$ Gm Gm7 C7 Gm7 C7

48 F Gm

FLY ME TO THE MOON

51 C7 Bbm6 F Em7 A7

54 **F**Dm7 Gm7 C7

58 **G**Bb Gm6 A7

61 Dm D7 Gm Gm7 C7 Gm7 C7

64 FM7 F7 Bb C7/G C7 *f*

67 **H**C7 Dm Bb

70 F

Detailed description of the musical score: The score is written in bass clef with a key signature of one flat (Bb). It consists of seven staves of music. The first staff (measures 51-53) contains three measures of whole rests, with chords C7, Bbm6 F, and Em7 A7 indicated above. The second staff (measures 54-57) contains four measures of music. Measure 54 starts with a boxed 'F' above a quarter note F2, followed by a quarter rest, a quarter note G2, and a quarter note A2. Measure 55 has a quarter note Bb2, a quarter note C3, and a quarter note D3. Measure 56 has a quarter note E3, a quarter note F3, and a quarter note G3. Measure 57 has a quarter note A3, a quarter note Bb3, and a quarter note C4. The third staff (measures 58-60) contains three measures. Measure 58 has a quarter note D3, a quarter note E3, and a quarter note F3. Measure 59 and 60 contain whole rests. The fourth staff (measures 61-63) contains three measures of whole rests. The fifth staff (measures 64-66) contains three measures. Measure 64 has a quarter note F2, a quarter note G2, and a quarter note A2. Measure 65 has a quarter note Bb2, a quarter note C3, and a quarter note D3. Measure 66 has a quarter note E3, a quarter note F3, and a quarter note G3. The sixth staff (measures 67-69) contains three measures. Measure 67 has a quarter note A3, a quarter note Bb3, and a quarter note C4. Measure 68 has a quarter note D4, a quarter note E4, and a quarter note F4. Measure 69 has a quarter note G4, a quarter note A4, and a quarter note Bb4. The seventh staff (measures 70-71) contains two measures. Measure 70 has a quarter rest. Measure 71 has a quarter note F2.